

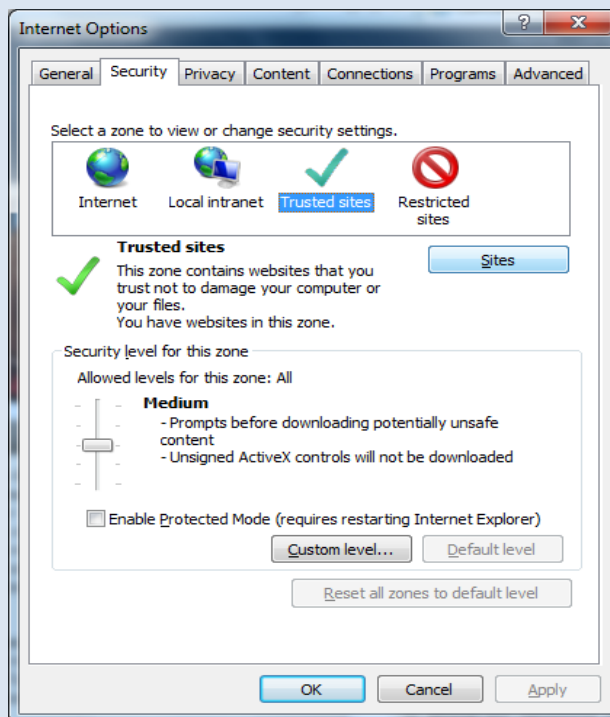
Citrix Remote Access

Instructions for Windows 7 with Internet Explorer 9

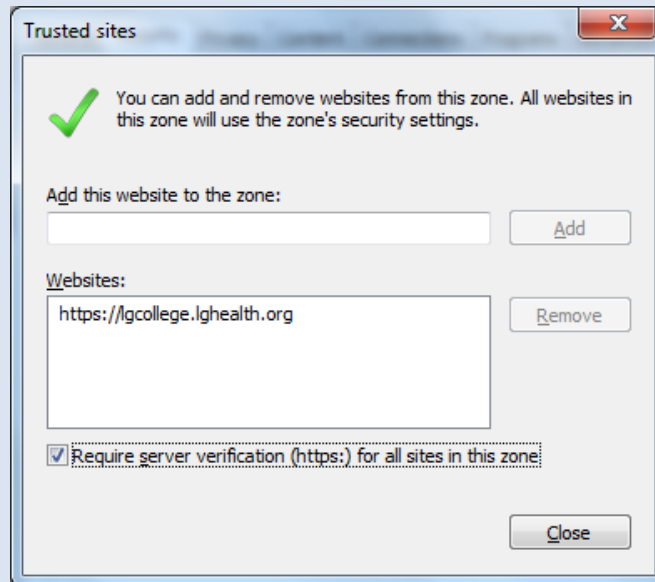
- Open Internet Explorer. Click on the Gears icon, and choose internet options.



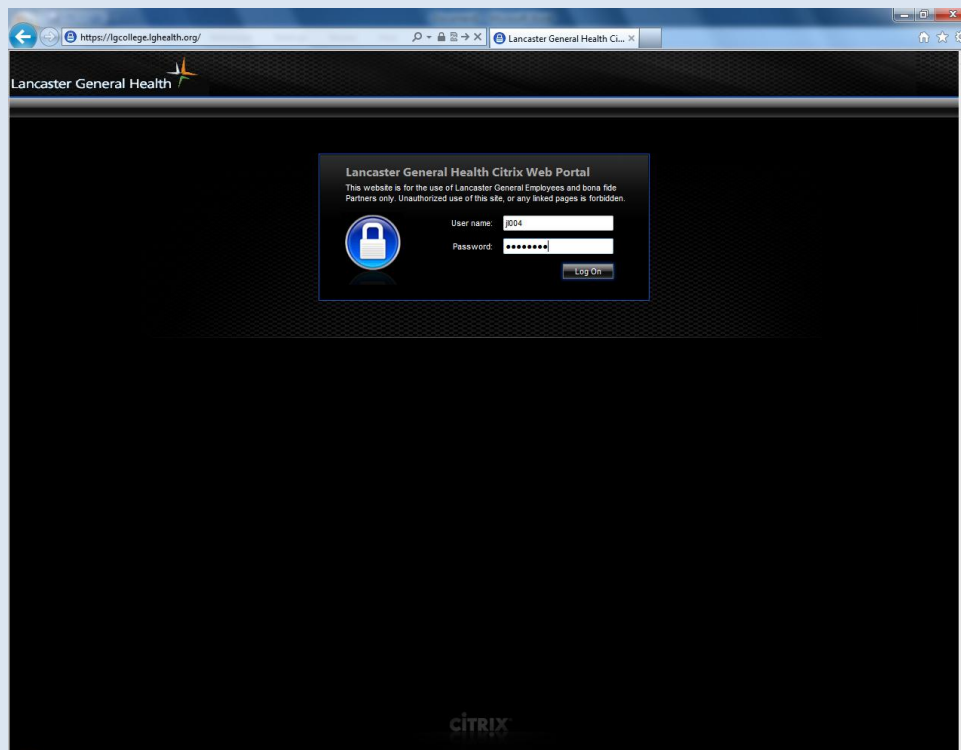
- Click on the Security Tab, then click on the green check mark, and click on the Sites button.



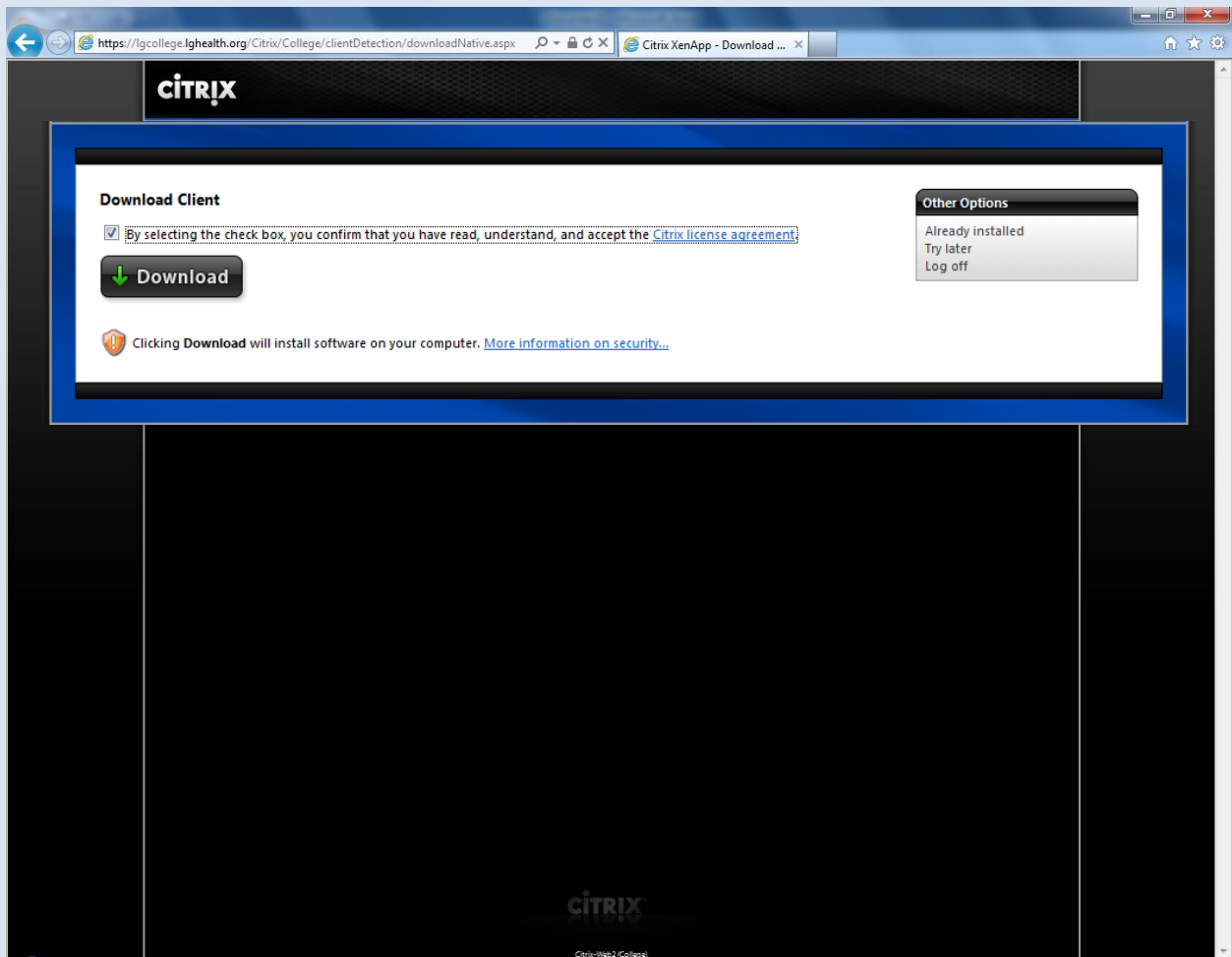
- Enter <https://lgcollege.lghealth.org> in the “Add this Website to the Zone” Click the Add button, select the check box for “Require server verification”, and then select the Close button.



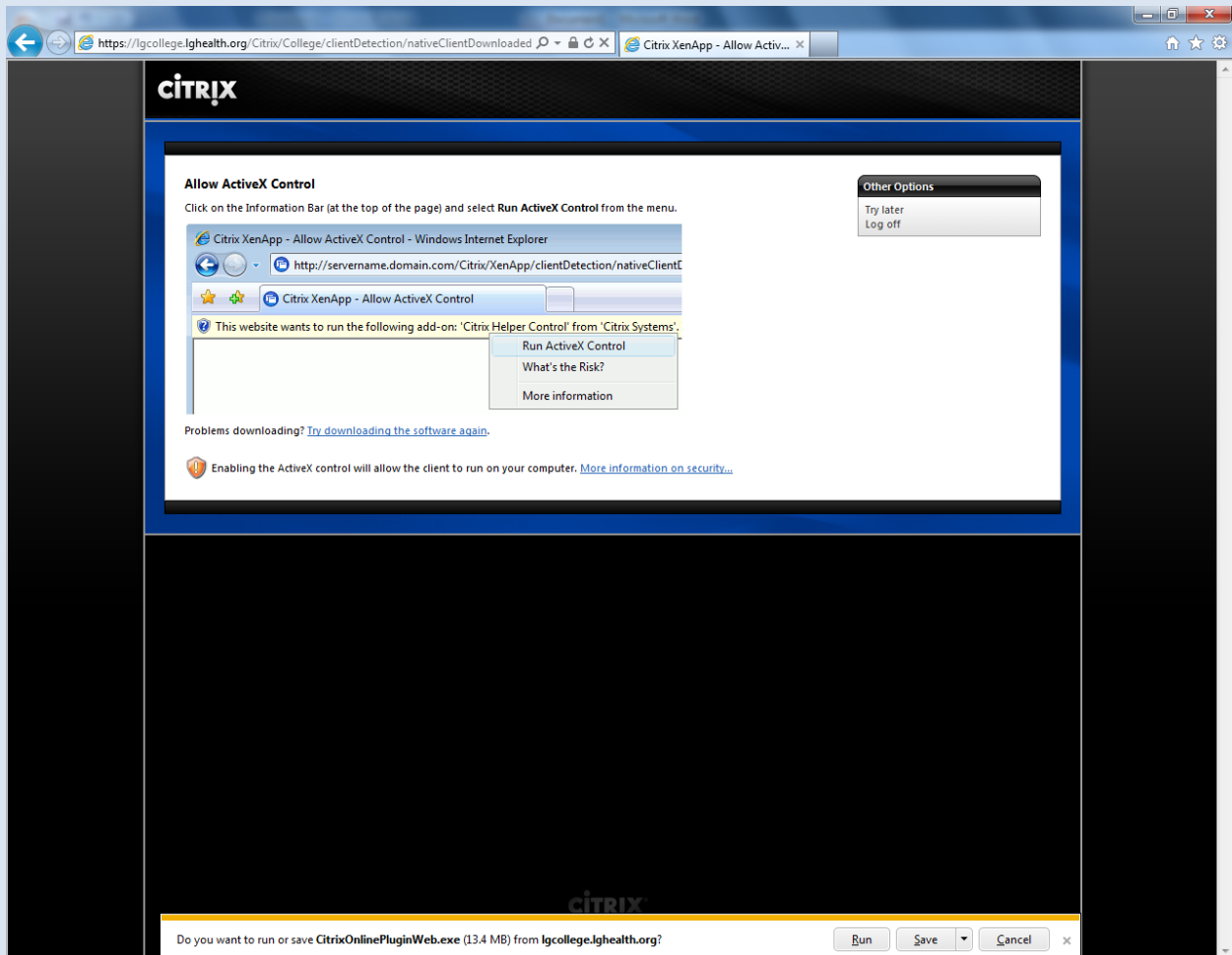
- Go to <https://lgcollege.lghealth.org/>
- Log in using your network credentials.



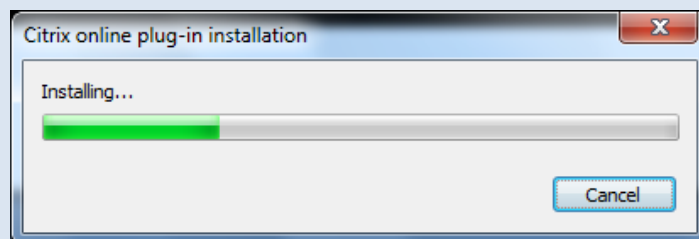
- When you login you will be prompted to install the Citrix Plugin.
- Select the check box for the license agreement and then click on the download button.



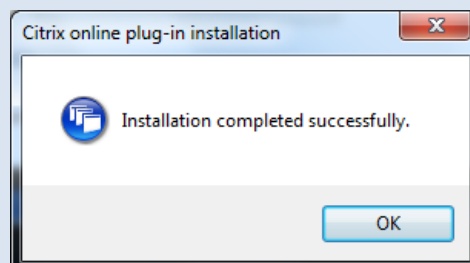
- At the bottom of the window, you are given 3 options, Run, Save, and Cancel. Choose Run.



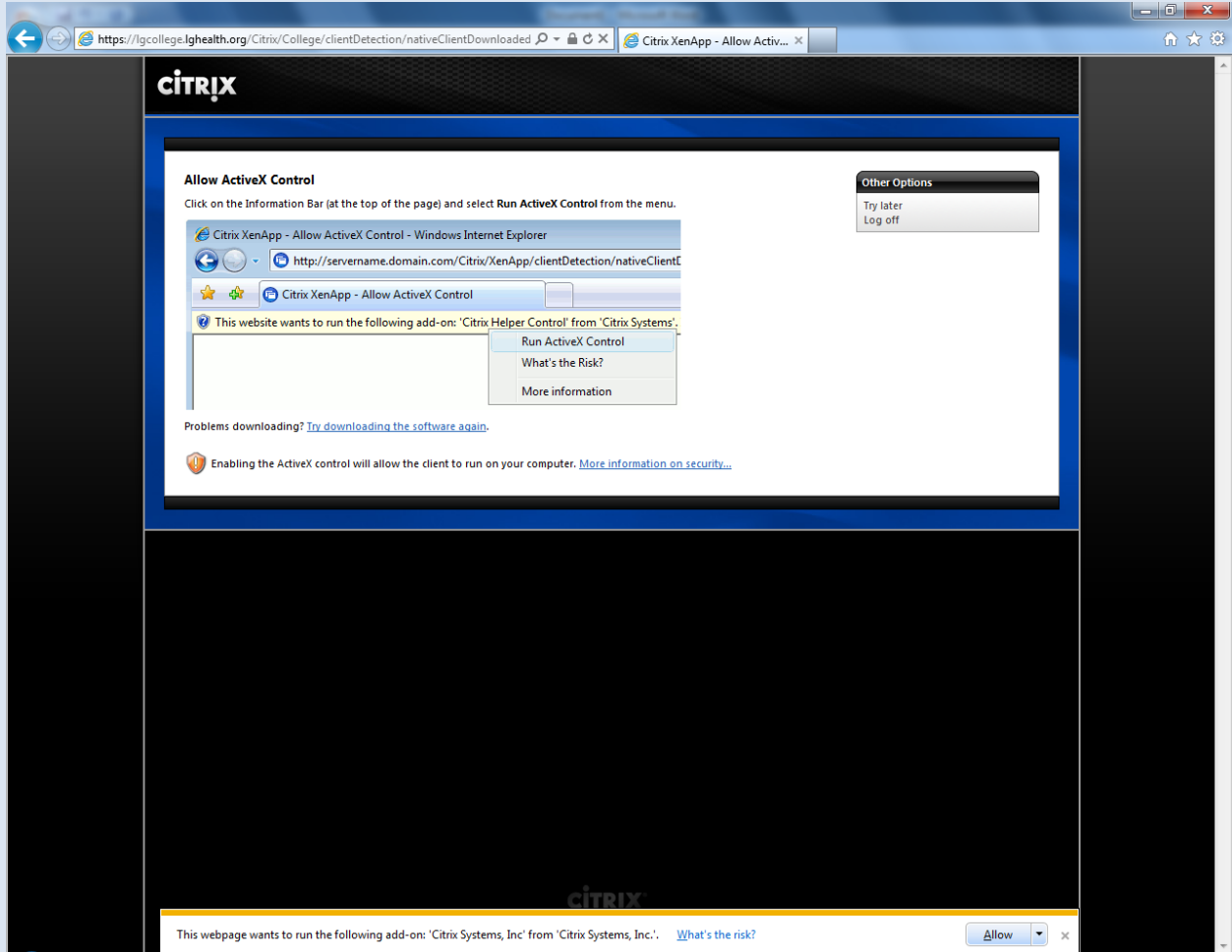
- A pop up box will appear. Click on the Yes button and the program will begin to install.



- Click on the OK button after the install



- At the bottom of the toolbar, choose Allow



- At the new pop up message, check the check box not to show the warning again, and then click on the allow button.

